

# ROOTS PROJECTS

The AJGS Vic can help you with your research:

<https://ajgs-vic.org.au/>

Go to the website and find links to websites.

<https://ajgs-vic.org.au/resources/>

The following can be used as a guide:

You might look for **family documents**

You might look for **photos of parents and grandparents**

You might look for **birth, marriage and death records**

You might look for **marriage Ketubah** (if appropriate)

You might look for **(place, town or city) of birth, marriage and death**

You might look for **Immigration and Naturalisation Records**

You might look for **shipping records, passenger arrival lists and name of ship**

You might look for **cemetery records**

You might look for **military records; WW1, WW2, Vietnam**

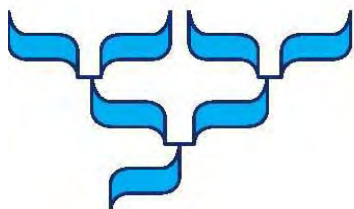
You might look for **probate records or wills**

You might look for **census lists**

You might look for **old prayer books** with family information

You might look for **Holocaust records: Yad Vashem, U.S.H.M.M and Arolsen Archives and Yizkor books**

**ASK US IF YOU NEED HELP - <https://ajgs-vic.org.au/>**



# Australian Jewish Genealogical Society (Vic) Inc

The **AJGS (Vic) Inc.** is a non-profit organisation, dedicated to collecting, preserving and disseminating genealogical information, techniques and research tools among people interested in Jewish genealogy and family history.

There are Jewish genealogical societies in the ACT, New South Wales, South Australia and Western Australia.

Founded in 1997, the AJGS (Vic) has about 180 members. The society is governed by a Committee of Management, and in accordance with its by-laws, all members are encouraged to volunteer and participate in the operation of the organisation. Anyone interested in Jewish genealogy, regardless of religion or ethnicity, is welcome to become a member.

We are a member of the International Association of Jewish Genealogical Societies (IAJGS), connecting its members with more than 80 Jewish genealogical societies around the world.

We have members with a broad range of genealogical skills and knowledge who are willing to share information with both beginning and experienced family researchers.

## Objectives

The AJGS (Vic) aims to:

- Encourage Jewish family research
- Educate society members and the public on Jewish genealogy through lectures, seminars and workshops
- Stimulate and provide instruction in the use of research methodology and adherence to standards of accuracy and thoroughness, and
- Promote the preservation of and access to Jewish genealogical records and resources.

## Meetings

Meetings are held regularly and provide a mix of lectures, workshops and panels geared to assist genealogists in the search for their Jewish roots. The meetings also provide the opportunity to network with others researching similar areas and family history.



## AJGS VIC Library resources

Access to **Ancestry.com** is available for use by members for their genealogy research.

We have a collection of Jewish genealogically relevant books, databases, Australian Jewish records and journals.

Our library collection is housed at the **Lamm Jewish Library of Australia**, 306 Hawthorn Road, Caulfield South, Victoria 3162. The online catalogue is at [www.ljla.org.au](http://www.ljla.org.au)

We are here to help with research and getting past road blocks. Please email [ajgsvictoria@gmail.com](mailto:ajgsvictoria@gmail.com) to make an appointment.

**Web Links for research** [www.ajgs-vic.org.au](http://www.ajgs-vic.org.au)

## Membership

Single membership: \$35 Family membership: \$50  
Concession (students and pensioners): \$20

Membership is paid annually, and there are reduced entry fees to meetings and a reduction in cost to join the Lamm Jewish Library of Australia.

Membership forms are available on the AJGS (Vic) website.

## Contact us

AJGS (Vic) Inc PO Box 2071, Camberwell West, Vic, 3124

Website: [www.ajgs-vic.org.au](http://www.ajgs-vic.org.au)

Email: [ajgsvictoria@gmail.com](mailto:ajgsvictoria@gmail.com)



## Australian Jewish Genealogical Society (Vic) Inc

### **HOW TO SUCCEED AT FAMILY RESEARCH IN 7 SIMPLE STEPS**

**Step 1.** Take the time to talk to any of your relatives. Whatever you do, ask parents, grandparents, aunts, uncles or cousins what they know about your family's past. Take video of interviews.

**Step 2.** Check out the many free genealogy websites that contain oodles of unique, helpful information.

**Step 3.** There are already so many wonderful family trees on the web. Check them out, **but verify the information**.

**Step 4.** Cite your sources. The details are what's important, and where those details come from. Sources provide credibility or valuable context to a fact.

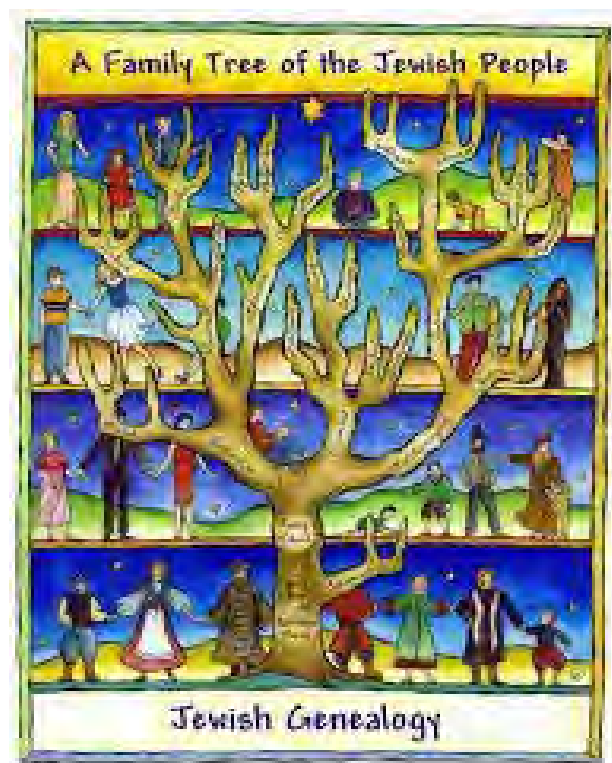
**Step 5.** Back up your data to more than one location.

**Step 6.** Don't be sloppy.

**Step 7.** Don't give up easily. Keep researching.



# **ROOTS PROJECT HOW TO USE JEWISHGEN**



**Australian Jewish Genealogical Society  
(Vic)**

**Bubbles Segall**

**February 2022**

## JOIN JEWISHGEN

**The best place to start your research is to join  
JewishGen**



- JewishGen is a **free, easy-to-use** genealogy website featuring tens of millions of records, research tools, and other resources to help those with Jewish ancestry research and find family members.
- JewishGen is run by **volunteers**.
- You need to **register** to use their site. It is easy to do.

# JEWISHGEN

## Home Page

[Website](https://www.jewishgen.org)

<https://www.jewishgen.org>

**Once you join, they will email your log-in details.**



The screenshot shows the JewishGen website's home page. At the top left is the JewishGen logo, a stylized green and blue flower, with the text "JewishGen" in green and blue, and below it in Hebrew "מרכז עולמי לגנאלוגיה יהודית" and "The Global Home for Jewish Genealogy". To the right of the logo is a "Login to JewishGen" link. Further right is a logo for the "MUSEUM OF JEWISH HERITAGE" with the text "An affiliate of" and "A LIVING MEMORIAL TO THE HOLOCAUST". Below these logos is a green navigation bar with buttons for "ABOUT US", "GET STARTED", "DATABASES", "RESEARCH", and "DONATE". The main content area has a blue header with the text "Welcome to JewishGen.org - The Global Home for Jewish Genealogy" and "Click the links below to get started." Below this are six blue circular icons arranged in a 2x3 grid. Each icon has a white symbol: a magnifying glass, a Star of David, an open book, a group of people, two hands shaking, and a dollar sign. Below each icon is a title and a description in blue text.

**JewishGen**  
מרכז עולמי לגנאלוגיה יהודית  
The Global Home for Jewish Genealogy

Login to JewishGen

An affiliate of  
**MUSEUM OF JEWISH HERITAGE**  
A LIVING MEMORIAL TO THE HOLOCAUST

ABOUT US GET STARTED DATABASES RESEARCH DONATE

**Welcome to JewishGen.org - The Global Home for Jewish Genealogy**  
Click the links below to get started.

**SEARCH**  
Tens of Millions of Jewish Records

**DISCOVER**  
Your Ancestral Town

**EXPLORE**  
What Life Was Like For Your Ancestors

**CONNECT**  
On the JewishGen Discussion Group

**GET INVOLVED**  
Join the Volunteer Team

**DONATE**  
Support Our Important Work

# **SOME FEATURES OF JEWISHGEN**

**JewishGen Family Finder**

**Holocaust Database**

**Yizkor Books**

**Sephardic Research**

**and much more!**



## **MORE FEATURES OF JEWISHGEN**

**JewishGen has various searchable databases which include information on the following countries:**

<b>Belarus</b>	<b>Romania</b>
<b>Germany</b>	<b>Moldova</b>
<b>Lithuania</b>	<b>South Africa</b>
<b>Germany</b>	<b>Syria</b>
<b>Hungary</b>	<b>Canada</b>
<b>Ukraine</b>	<b>France</b>
<b>United Kingdom</b>	<b>Latin America</b>
<b>United States of America</b>	<b>Czech Republic</b>
<b>Scandinavia</b>	<b>Austria</b>
<b>Israel</b>	<b>Poland</b>
<b>Latvia</b>	<b>Netherlands</b>

**Some of these databases don't have much information while others have countless entries.**



## HOW TO USE JEWISHGEN – STEP 1



**Once you have received your log-in details, log in and click on **Research**.**

## HOW TO USE JEWISHGEN – STEP 2

The form above allows you to search all of the text on JewishGen's web pages.

Note that this search does **not** include JewishGen's databases, which must be searched separately:

- To search for family surnames and ancestral towns, search the [JewishGen Family Finder](#).
- To search JewishGen's other databases, see the [JewishGen Databases index](#).



**Once you click on Research, it will take you to this screen. To search for all the databases, click on [JewishGen Databases Index](#).**

## HOW TO USE JEWISHGEN – STEP 3



**JewishGen**  
מרכז עולמי לגנאלוגיה יהודית  
The Global Home for Jewish Genealogy

Login to JewishGen

An affiliate of  
MUSEUM OF  
JEWISH HERITAGE  
A LIVING MEMORIAL  
TO THE HOLOCAUST

ABOUT US GET STARTED DATABASES RESEARCH DONATE

Home » JewishGen Databases

General	Eastern Europe	Belarus	Latvia	Lithuania
Poland	Germany	Austria / Czech	Hungary	Romania / Moldova
Ukraine	United Kingdom	France	Scandinavia	South Africa
Israel	Syria	United States	Canada	Latin America
Netherlands	Sephardic	Crypto Jewish	Miriam Weiner	Jeff Malka Sephardic

**General:**

- Unified Search**  
Explore millions of records from around the world, including more than 3.69 million records related to the Holocaust, and more than 4.1 million burial records. Records are continually updated/added.
- The JewishGen Family Finder (JGFF)**  
Surnames and ancestral towns being researched by 110,000 Jewish genealogists worldwide. More than 600,000 entries.
- The Family Tree of the Jewish People (FTJP)**  
Data on more than eight million people, from family trees submitted by 6,000 Jewish genealogists worldwide.
- The JewishGen Communities Database**  
Historical names and jurisdictions, maps, JewishGen links and resources for more than 6,000 Jewish communities in Europe, North Africa, and the Middle East.
- The JewishGen Gazetteer**  
Locate places in Europe, North Africa, and the Middle East, by name or location. U.S. Board on Geographic Names data for 54 countries.
- The JewishGen Holocaust Database**  
More than 2.75 million entries regarding Holocaust victims and survivors, from many sources.
- Miriam Weiner: Routes To Roots Collection**  
New Partnership with Miriam Weiner & The Routes to Roots Foundation
- The JewishGen Online Worldwide Burial Registry (JOWBR)**  
More than three million entries from cemeteries and burial records worldwide, from 7,500 cemeteries in 128 countries.
- The JewishGen Memorial Plaques Database**  
Information from synagogue yahrzeit plaques and other memorial records. 177,000 records from 263 synagogues.
- The JewishGen Discussion Group message Archives**  
Search more than 588,000 topics. 1993-date.
- Jewish Records at the Family History Library**  
An inventory of the Jewish-specific resources at the LDS Family History Library in Salt Lake City.
- Ellis Island Foundation Database**  
One-Step Search Tools — enhanced search capabilities for easier access to data on www.ellisland.org.

Once you click on JewishGen Databases Index, it will take you to this list containing the **databases**. Once you click on the country you are researching which is at the top of the screen, it will take you to the **country at the bottom of this screen** where you can start your research.

## AN EXAMPLE OF RESEARCHING IN LITHUANIA

### Lithuania:



#### The JewishGen Lithuania Database



More than 2.3 million records for Lithuania, from a variety of sources, including: vital records, Revision Lists, business directories, voter lists, Yizkor books, cemetery records, Holocaust sources, and more.

This database includes the LitvakSIG "All Lithuania" Database

Click on the **JewishGen Lithuania Database**.



## HOW TO RESEARCH – STEP 1

**JewishGen Lithuania Collection**

The *JewishGen Lithuania Collection* is a multiple-database search, which incorporates all of the databases listed below. In total, the collection includes more than 2.4 million records.

How do I get the best Search Results?

Surname  Phonetically Like

Data Type  Search Type

Data Type  Search Type

Data Type  Search Type

☒ Match ALL of the above (logical AND)  
☐ Match ANY of the above (logical OR)

Region:






Once you click on The **JewishGen Lithuania Database**, it will take you to this screen.

By picking **phonetically like**, it gives you a variety of different spellings for the surname you are researching which you will see on the next slide. I have used the surname **MALUN** as an example.

Remember that how you spell your surname now, may not be the way your ancestors spelled it.

Click on **Search the JewishGen Lithuania Database**.

## HOW TO RESEACH – STEP 2

Surname (phonetically like) : MALUN	
Run on Sun, 23 Jan 2022 14:57:31 -0700	
Description	Press the Button to view the matches
 JewishGen Family Finder	List 4 records
 LitvakSIG Lithuanian Jewish special interest group dedicated to discovering and preserving your Lithuanian heritage	List 12 records
<a href="#">Lithuania Births</a> →	
 LitvakSIG Lithuanian Jewish special interest group dedicated to discovering and preserving your Lithuanian heritage	List 4 records
<a href="#">Lithuania Deaths</a> →	
 LitvakSIG Lithuanian Jewish special interest group dedicated to discovering and preserving your Lithuanian heritage	List 3 records
<a href="#">Lithuania Marriages and Divorces</a> →	
<a href="#">Lithuania Internal Passports Database, 1919-1940</a> →	List 9 records
 LitvakSIG Lithuanian Jewish special interest group dedicated to discovering and preserving your Lithuanian heritage	List 2 records
<a href="#">Tax and Voters Lists</a> →	
<a href="#">The 1915 Vsia Vilna Database</a> →	List 2 records
 LitvakSIG Lithuanian Jewish special interest group dedicated to discovering and preserving your Lithuanian heritage	List 38 records
<a href="#">The All Lithuania Revision List Database</a> →	

After clicking on **Search the JewishGen Lithuania Database**, this screen will appear which shows you all the different places where the name **MALUN** appears. The I find most useful, is the last one, **The All Lithuania Revision List Database** which lists 38 records. Click on List 38 records.

## HOW TO RESEACH – STEP 3

<div>Panevezys</div> <div>Volost</div> <div>Panevezys</div> <div>Kaunas</div>	MALUN / MASIUN (?), Girsh	Abram	Head of Household			Registered in Panevezys, lives in the village of Kulbe since 1872			
	MALUN / MASIUN (?), Kreysa		Wife						
	MALUN / MASIUN (?), Kalman	Girsh	Son						
	MALUN / MASIUN (?), Leyba	Girsh	Son				January	84	Families Living Out Of Towns; 5th Stan
	MALUN / MASIUN (?), Itsyk	Girsh	Son				1898	102	KRA/I-26/1/2
	MALUN / MASIUN (?), Brayna	Girsh	Daughter						
	MALUN / MASIUN (?), Chana	Girsh	Daughter						
	MALUN / MASIUN (?), Iudasha	Girsh	Daughter						
	MALUN / MASIUN (?), Ester	Girsh	Daughter						

Here you have information on the entire family. **Girsh** is the head of the household, **Abraham** is his father, **Kreysa** is Girsh's wife. Their children: **Kalman, Leyba, Itsyk, Brayna, Chana, Iudasha** and **Esther**.

Note the variations in the spelling of the surname **Malun**.

## **TIPS**

**While researching, you may come across someone with the same name as one of your relatives, don't assume that this person is your relative.**

**Don't assume that your ancestors spelled your surname the same way as it is spelled today.**

**Ashkenazi Jews have the custom of naming a child after a relative who has passed away. This keeps the name and memory alive.**

**Sephardic Jews often name their children after living relatives.**





**GOOD LUCK WITH YOUR RESEARCH**

**The Australian Jewish Genealogical  
Society (Vic) is always here to assist you  
with your research.**

**You can contact us at  
[ajgsvictoria@gmail.com](mailto:ajgsvictoria@gmail.com)**



# Australian Jewish Genealogical Society (Vic) Inc

## SOME USEFUL WEBSITES

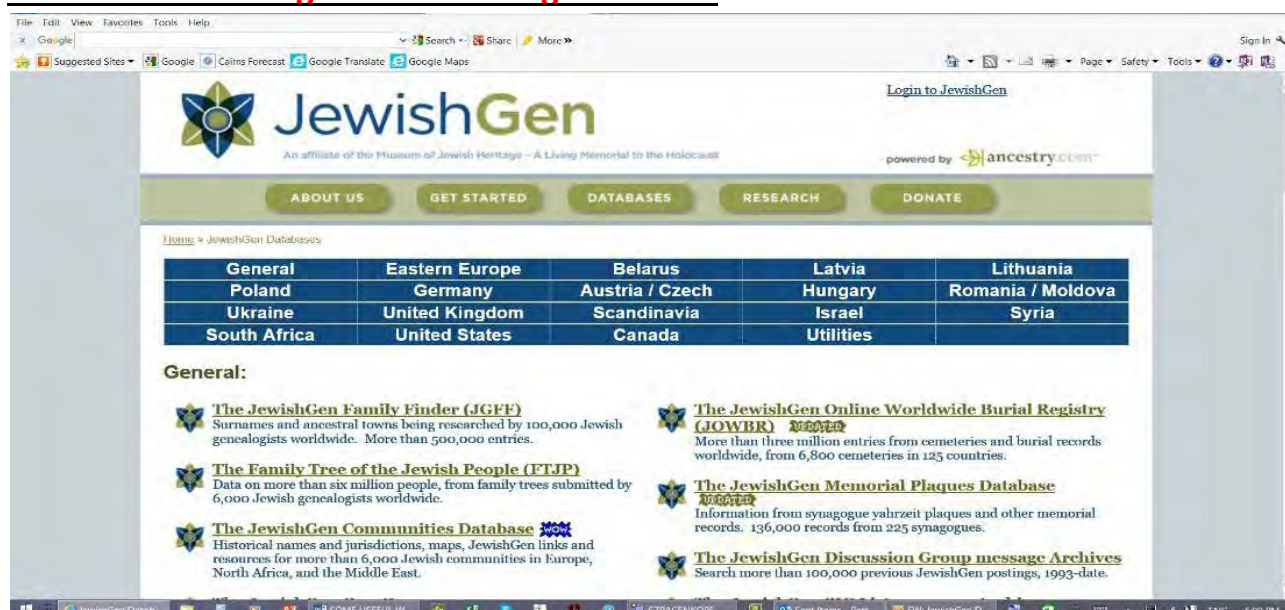
For websites by country & other links

<http://www.ajgs-vic.org.au>

JewishGen

<http://www.jewishgen.org/>

**You will need to register with a "log in" name:**



**JewishGen Unified search of ALL records**

<https://www.jewishgen.org/databases/all/>

**Jewishgen List of Countries' and info databases**

<http://www.jewishgen.org/databases/>

### **FAMILY TREES ON LINE**

Family Tree of the Jewish People

<http://www.jewishgen.org/gedcom/>

My Heritage (\$)

<https://www.myheritage.com>

Ancestry.com.au (\$)

<http://ancestry.com.au/>

Geni (\$)

<http://www.geni.com>

### **HOLOCAUST**

Yad Vashem

<http://yvng.yadvashem.org/index.html?language=en>

Jewish Gen's Holocaust

<http://www.jewishgen.org/databases/Holocaust/>

United States Holocaust Museum

<http://www.ushmm.org/>

Bad Arolsen – International Tracing Service

<https://arolsen-archives.org/en/search-explore/search-online-archive/>

**AUSTRALIA**

National Archives –Australia

<http://naa.gov.au/>

Public Record Office Victoria

<http://prov.vic.gov.au/>

Australian Newspapers (includes Jewish News)

<https://trove.nla.gov.au/newspaper>**BURIAL INFORMATION**

JewishGen Online Worldwide Burial Reg. JOWBR

<http://www.jewishgen.org/databases/Cemetery/>

Melbourne Chevra Kadisha /Search

<http://www.mck.org.au/search>

Billion Graves

<https://billiongraves.com/>

Find a Grave

<https://www.findagrave.com/>**AREA SPECIFIC**

Jewish Records Indexing – Poland

<http://jri-poland.org/jriplweb.htm>

JewishGen Kehilalinks

<http://kehilalinks.jewishgen.org/>

Gesher Galicia

<http://www.geshergalicia.org/>

Dutch Genealogy

<http://www.dutchgenealogy.nl/blog/>

Sephardic

<http://www.sephardicgen.com/databases/databases.html>

Israeli Genealogy Research Assoc (IGRA) (\$)

<https://genealogy.org.il/>

Turkey Cemetery Records

<https://www.jewishgen.org/databases/Cemetery/>

India, Delhi Archives office

<http://www.archives.delhi.gov.in/delhiarchive/>**GENERAL RECORDS**

Family Search (LDS /Mormon website)

<https://familysearch.org/>

Genealogy Indexer

<http://genealogyindexer.org/>

Museum of the Jewish People (Beit Hatfutsot)

<http://www.bh.org.il/>

Routes to Roots

<http://www.rtrfoundation.org/index.shtml>

Cyndi's List – Jewish

<http://www.cyndislist.com/jewish>

Jewish Surname Index

<http://www.avotaynu.com/csi/csi-result.html?page=original>